



# Alameda Corridor-East Construction Authority

4900 Rivergrade Road, Ste. 120 Irwindale, CA 91706 (626) 962-9292 fax (626) 472-0094 www.theaceproject.org

## **\*\* CONSTRUCTION ALERT \*\***

### **TEMPORARY TRAFFIC LANE CLOSURES FOR 4-6 WEEKS DUE TO UTILITY RELOCATION ON MISSION ROAD FROM WEST OF RAMONA STREET TO JUNIPERO SERRA DRIVE**

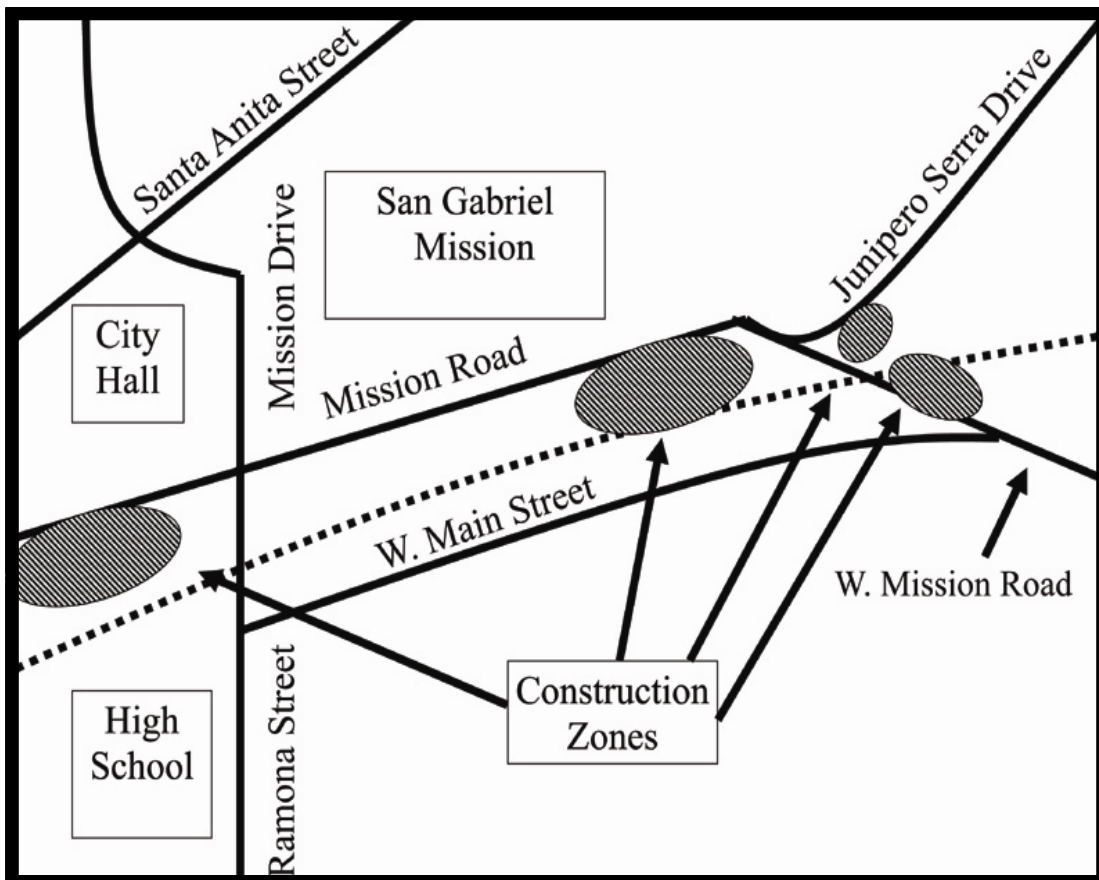
#### **WHAT**

To make way for the San Gabriel Trench Grade Separation Project, Time Warner Telecom's underground utility lines will be relocated along Mission Road on the railroad right-of-way beginning just west of Ramona Street to Junipero Serra Drive. Construction work will include investigatory drilling and conduit installation (see diagram below).

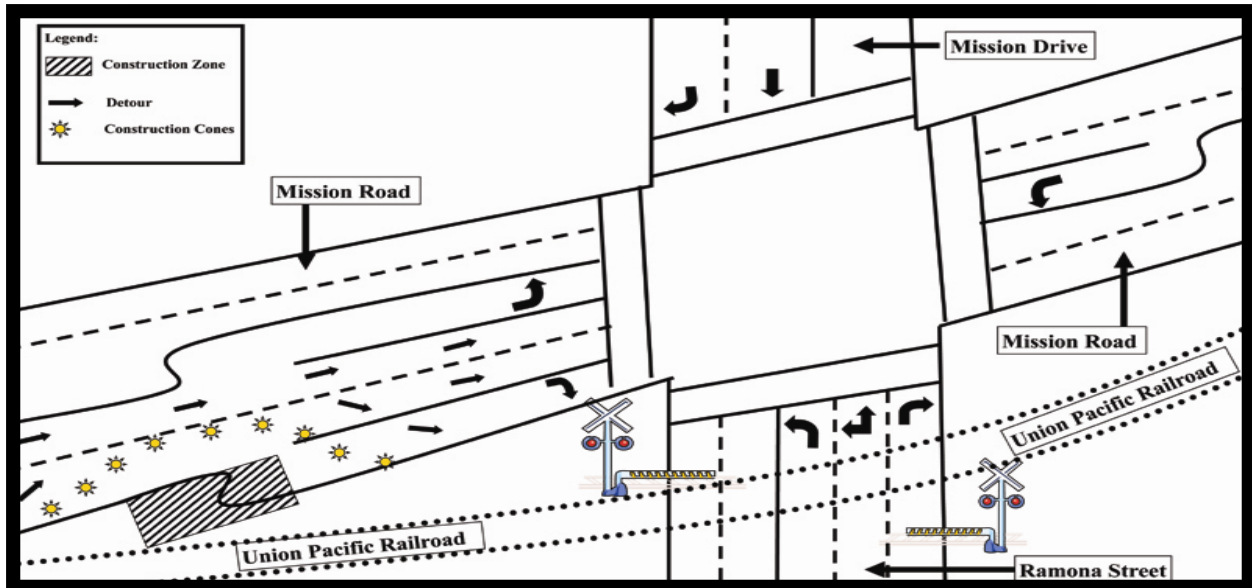
#### **WHAT TO EXPECT**

Traffic lanes will be temporarily and partially closed eastbound on Mission Road approximately 300 feet west of Ramona Street (Figure 1), and separately along Mission Road between Ramona Street and W. Mission Road, and on northbound W. Mission Road just south of Junipero Serra Drive (Figure 2). Work will require the use of construction equipment. Motorists and pedestrians are urged to obey posted signs and to exercise caution while in the vicinity of all construction activity.

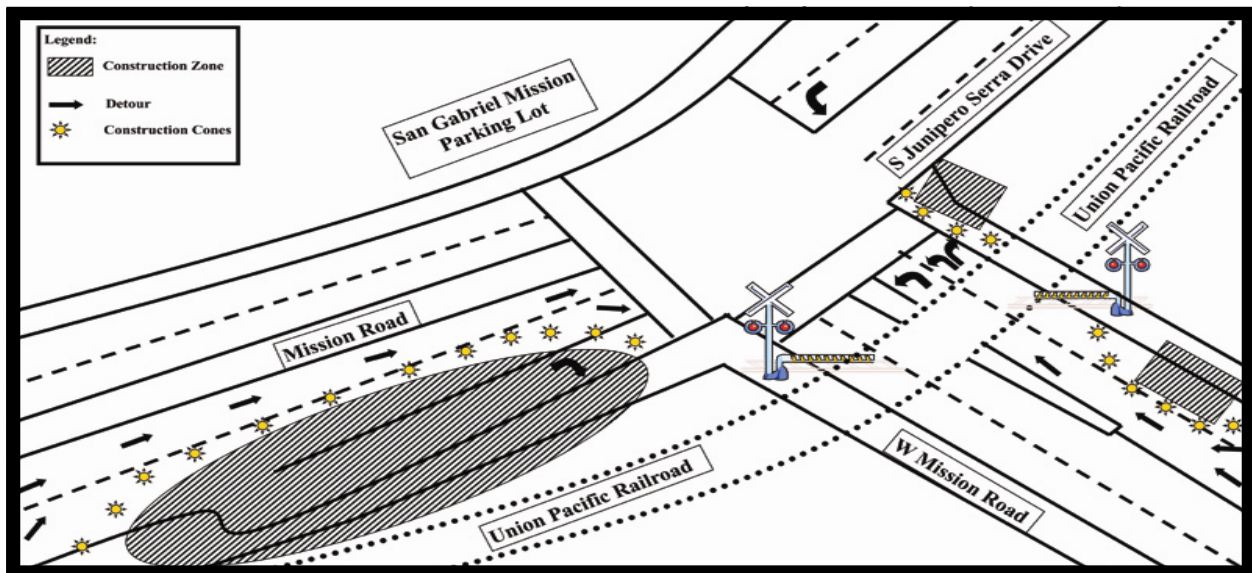
#### **Project Overview**



**Figure 1**



**Figure 2**



## WHEN

Construction will begin on **Monday, August 1, 2011** and is expected to take approximately four to six weeks. Most construction will occur weekdays between 8 a.m. and 5 p.m. Weekend work is not anticipated, however night work may occur. Please check the ACE website at [www.theaceproject.org](http://www.theaceproject.org) for the most up-to-date information.

## WHERE

Construction will occur along Mission Road on the railroad right-of-way beginning approximately 300 feet west of Ramona Street to Junipero Serra Drive in the City of San Gabriel.

*Para información o preguntas, por favor llame al teléfono directo o visite el sitio web en:*

*如有疑問或需要索取工程最新資料，請致電輔助熱線或參閱工程網頁*

For more information or questions, please call or visit:

**(888) ACE-1426 or [www.theaceproject.org](http://www.theaceproject.org)**

*Thank you for your patience and cooperation...At ACE, it's Safety First!*